

Signature Series

- 1 Story**
- 3 Bedroom**
- 2 Bathrooms**
- 2 Car Garage**

AFFORDABLE LUXURY HOME IN NORTH PORT AND EAST ENGLEWOOD

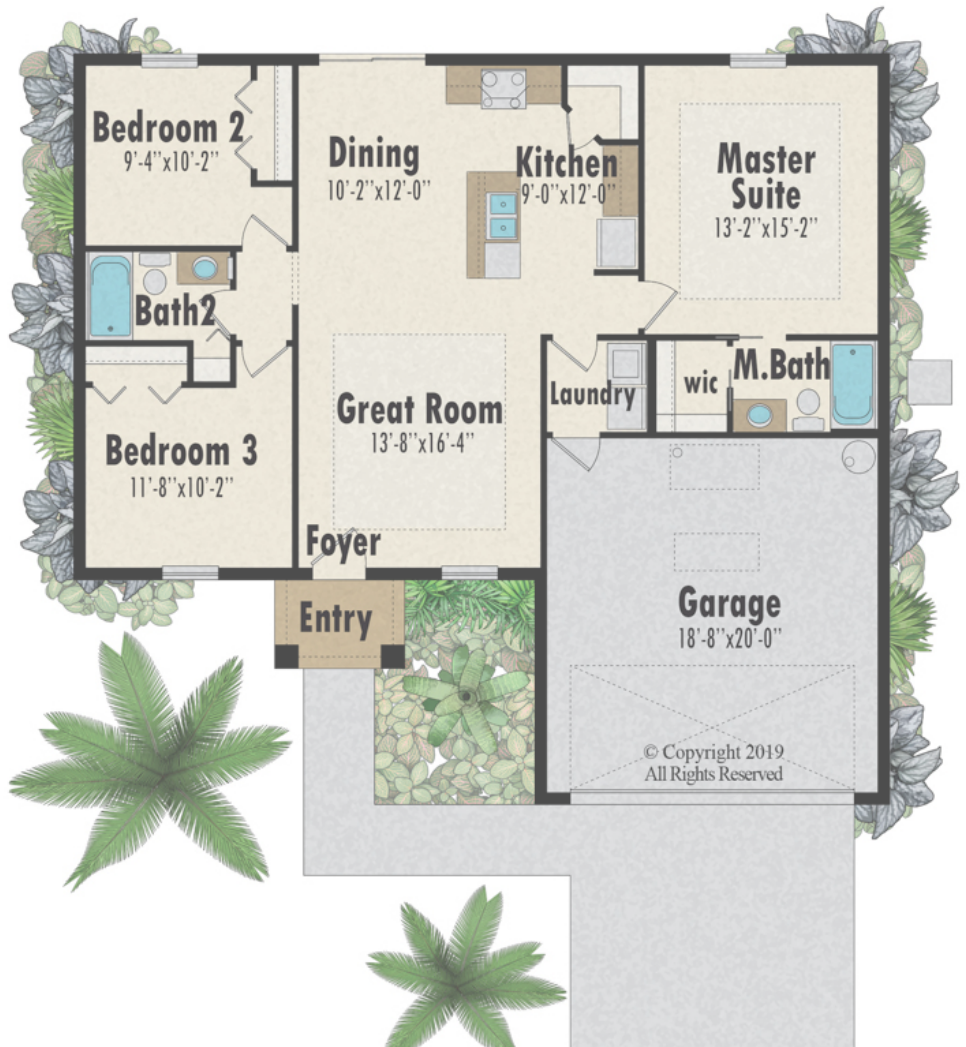
The Useppa home combines comfort with elegance and livability. With a functional floorplan and timeless design, this home is ideal for new families or retirees looking to downsize.



Living Space:	1210 SF
Garage:	408 SF
Entry:	37 SF
<hr/>	
Total:	1655 SF

Features

Private master suite with walk-in closet, kitchen island, walk-in pantry, coffered ceiling in great room and master suite, sliding glass door off dining room, maximum ceiling height 8'8"



* Floorplans are artistic depictions and may be shown with optional features

* Square footage and room sizes are approximate and may vary in construction